



# 2N7002W

## 60V N-Channel Enhancement Mode MOSFET

### FEATURES

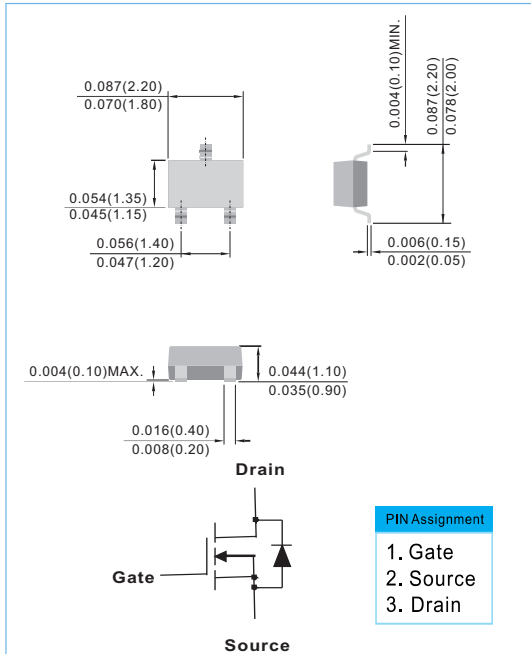
- $R_{DS(ON)}$ ,  $V_{GS}$  @  $10V$ ,  $I_{DS}$  @  $500mA=5\Omega$
- $R_{DS(ON)}$ ,  $V_{GS}$  @  $4.5V$ ,  $I_{DS}$  @  $75mA=7.5\Omega$
- Advanced Trench Process Technology
- High Density Cell Design For Ultra Low On-Resistance
- Specially Designed for Battery Operated Systems, Solid-State Relays  
Drivers : Relays, Displays, Lamps, Solenoids, Memories, etc.
- Lead free in comply with EU RoHS 2002/95/EC directives.
- Green molding compound as per IEC61249 Std. . (Halogen Free)

### MECHANICAL DATA

- Case: SOT-323 Package
- Terminals : Solderable per MIL-STD-750, Method 2026
- Apporx. Weight: 0.0002 ounces, 0.005 grams
- Marking : 72W

### SOT-323

Unit : inch(mm)



### Maximum RATINGS and Thermal Characteristics ( $T_A=25^\circ C$ unless otherwise noted )

PARAMETER	Symbol	Limit	Units
Drain-Source Voltage	$V_{DS}$	60	V
Gate-Source Voltage	$V_{GS}$	$\pm 20$	V
Continuous Drain Current	$I_D$	115	mA
Pulsed Drain Current <sup>1)</sup>	$I_{DM}$	800	mA
Maximum Power Dissipation	$P_D$	$T_A=25^\circ C$ 200 $T_A=75^\circ C$ 120	mW
Operating Junction and Storage Temperature Range	$T_J, T_{STG}$	-55 to + 150	$^\circ C$
Junction-to Ambient Thermal Resistance(PCB mounted) <sup>2</sup>	$R_{\theta JA}$	625	$^\circ C/W$

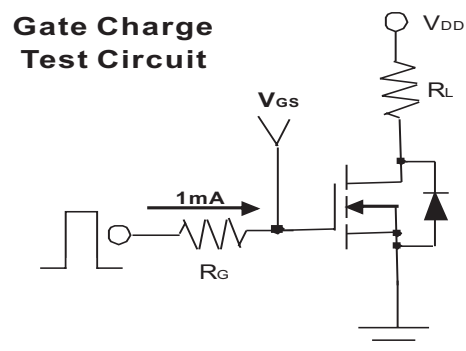
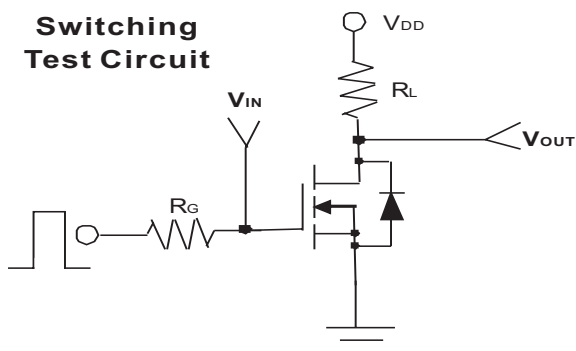
- Note: 1. Maximum DC current limited by the package  
2. Surface mounted on FR4 board,  $t \leq 10$  sec



# 2N7002W

## ELECTRICAL CHARACTERISTICS

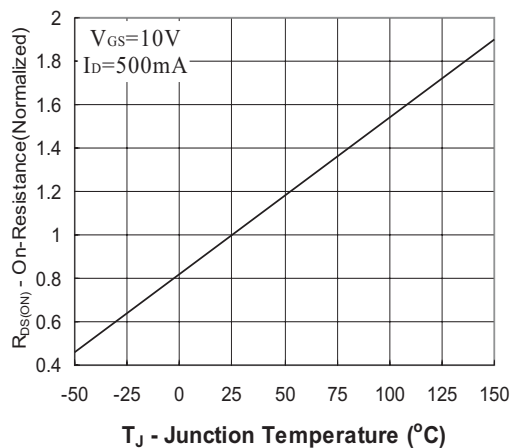
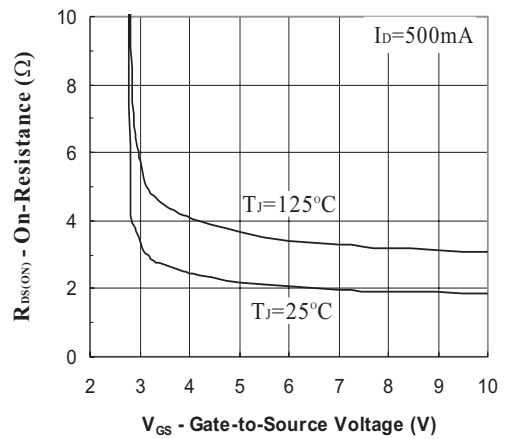
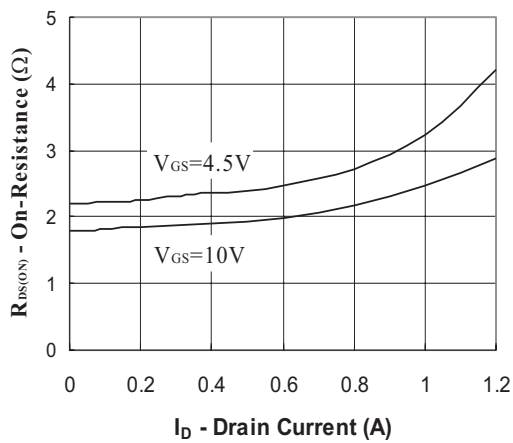
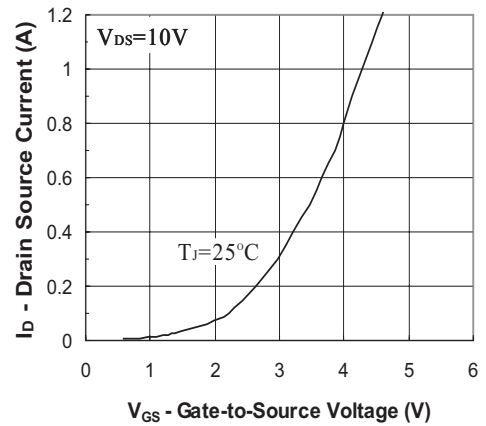
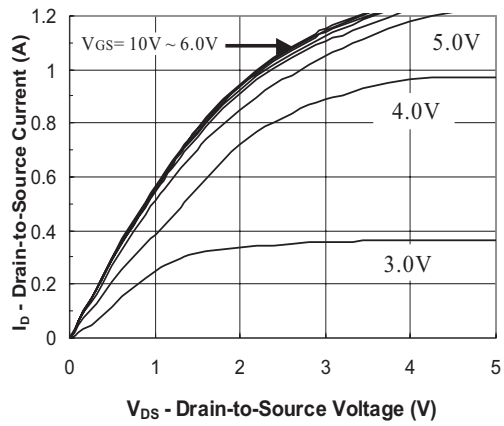
Parameter	Symbol	Test Condition	Min.	Typ.	Max.	Units
Static						
Drain-Source Breakdown Voltage	$BV_{DSS}$	$V_{GS}=0V, I_D=10\mu A$	60	-	-	V
Gate Threshold Voltage	$V_{GS(th)}$	$V_{DS}=V_{GS}, I_D=250\mu A$	1	-	2.5	V
Drain-Source On-State Resistance	$R_{DS(on)}$	$V_{GS}=4.5V, I_D=75mA$	-	-	7.5	$\Omega$
Drain-Source On-State Resistance	$R_{DS(on)}$	$V_{GS}=10V, I_D=500mA$	-	-	5	
Zero Gate Voltage Drain Current	$I_{DSS}$	$V_{DS}=60V, V_{GS}=0V$	-	-	1	$\mu A$
Gate Body Leakage	$I_{GSS}$	$V_{GS}=\pm 20V, V_{DS}=0V$	-	-	$\pm 100$	nA
Forward Transconductance	$g_{fs}$	$V_{DS}=15V, I_D=250mA$	200	-	-	mS
Dynamic						
Total Gate Charge	$Q_g$	$V_{DS}=15V, I_D=500mA$ $V_{GS}=4.5V$	-	0.6	0.7	nC
Gate-Source Charge	$Q_{gs}$		-	0.1	-	
Gate-Drain Charge	$Q_{gd}$		-	0.08	-	
Turn-On Delay Time	$t_{on}$	$V_{DD}=10V, R_L=20\Omega$ $I_D=500mA, V_{GEN}=10V$ $R_G=10\Omega$	-	9	15	ns
Turn-Off Delay Time	$t_{off}$		-	21	26	
Input Capacitance	$C_{iss}$	$V_{DS}=25V, V_{GS}=0V$ $f=1.0MHz$	-	-	50	pF
Output Capacitance	$C_{oss}$		-	-	25	
Reverse Transfer Capacitance	$C_{rss}$		-	-	5	
Source-Drain Diode						
Max. Diode Forward Current	$I_s$	-	-	-	250	mA
Diode Forward Voltage	$V_{SD}$	$I_s=250mA, V_{GS}=0V$	-	0.93	1.2	V





# 2N7002W

Typical Characteristics Curves ( $T_J=25^\circ\text{C}$ , unless otherwise noted)





# 2N7002W

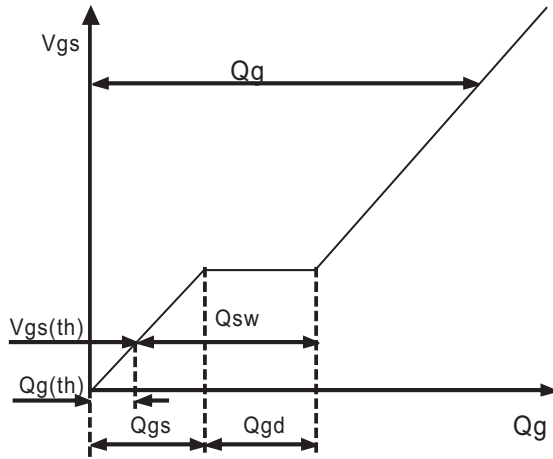


Fig. 6 - Gate Charge Waveform

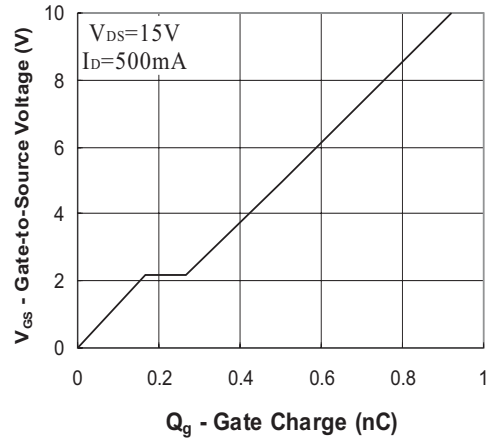


Fig. 7 - Gate Charge

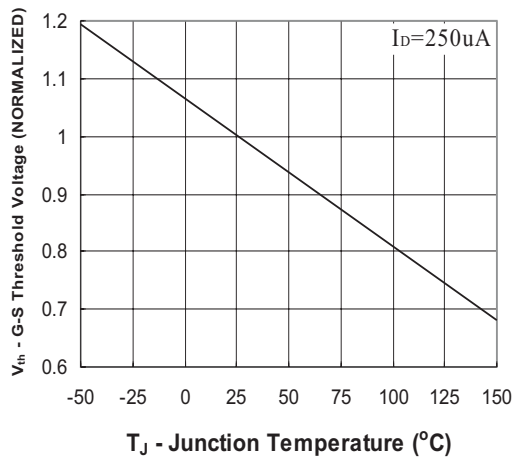


Fig. 8 - Threshold Voltage vs Temperature

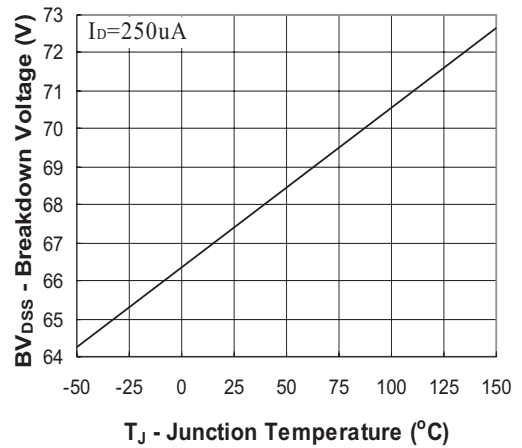


Fig. 9 - Breakdown Voltage vs Junction Temperature

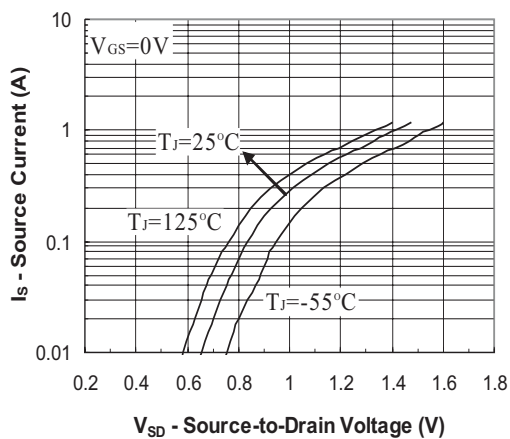
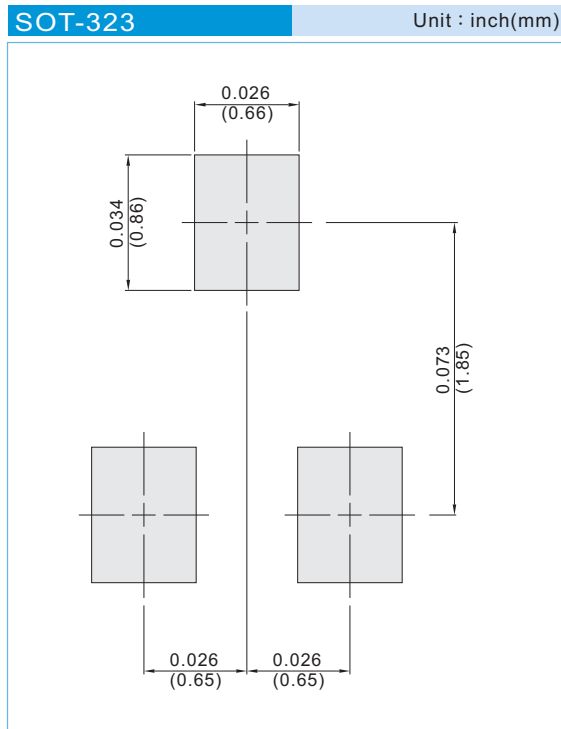


Fig. 10 - Source-Drain Diode Forward Voltage



# 2N7002W

## MOUNTING PAD LAYOUT



## ORDER INFORMATION

- Packing information
  - T/R - 12K per 13" plastic Reel
  - T/R - 3K per 7" plastic Reel

## LEGAL STATEMENT

### Copyright PanJit International, Inc 2012

The information presented in this document is believed to be accurate and reliable. The specifications and information herein are subject to change without notice. Pan Jit makes no warranty, representation or guarantee regarding the suitability of its products for any particular purpose. Pan Jit products are not authorized for use in life support devices or systems. Pan Jit does not convey any license under its patent rights or rights of others.

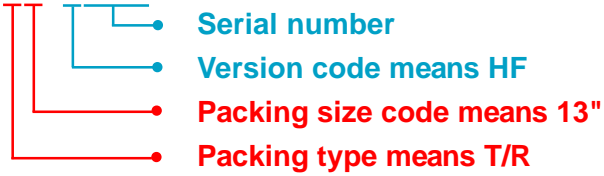


# 2N7002W

For example :

**RB500V-40\_R2\_00001**

Part No.



Packing Code <b>XX</b>				Version Code <b>XXXXX</b>		
Packing type	1 <sup>st</sup> Code	Packing size code	2 <sup>nd</sup> Code	HF or RoHS	1 <sup>st</sup> Code	2 <sup>nd</sup> ~5 <sup>th</sup> Code
T/B	<b>A</b>	N/A	<b>0</b>	<b>HF</b>	<b>0</b>	serial number
T/R	<b>R</b>	7"	<b>1</b>	<b>RoHS</b>	<b>1</b>	serial number
B/P	<b>B</b>	13"	<b>2</b>			
T/P	<b>T</b>	26mm	<b>X</b>			
TRR	<b>S</b>	52mm	<b>Y</b>			
TRL	<b>L</b>	PBCU	<b>U</b>			
FORMING	<b>F</b>	PBCD	<b>D</b>			

**Part No\_packing code\_Version**

2N7002W\_R1\_00001

2N7002W\_R2\_00001

[www.s-manuals.com](http://www.s-manuals.com)