

High-Side Power Distribution Switch

Features

- 120mΩ High-Side MOSFET
- 2A of Current Limits with Foldback
- Operating Range: 2.7V to 5.5V
- 1.9ms Typical V_{OUT} Turn-On Rise Time
- Under voltage Lockout
- 65μA Quiescent Supply Current
- 1μA Maximum Standby Supply Current
- Active-High Enable Pin
- No Reverse Current when Power Off
- Shutdown Discharge Function at OUT Pin
- SOT-23-5 Package
-

Applications

- High-Side Power Protection Switch
- USB Power Management
- USB Host and Self-Powered Bubs
- USB Bus-Powered Hubs
- Hot Plug-In Power Supplies
- Battery-Charger Circuits

General Description

The G5243A is an integrated 120mΩ power switch for self-powered and bus-powered Universal Serial Bus (USB) applications.

Several Protection features include current limiting with foldback, and thermal shutdown to prevent catastrophic switch failure caused by increasing power dissipation when continuous heavy loads or short circuit occurs. And a built-in charge pump is used to drive the N-channel MOSFET that is free of parasitic body diode to eliminate any reversed current flow across the switch when it is powered off. G5243A has shutdown discharge function when power switch is off. The typical pull low resistor is 75Ω.

Its low quiescent supply current and small package (SOT-23-5) is particularly suitable in battery-powered equipment, like PDA, mobile phone.

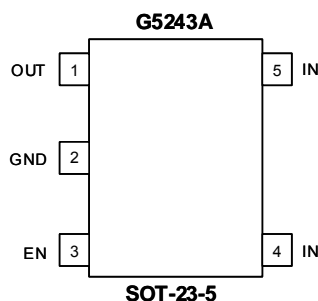
Ordering Information

ORDER NUMBER	MARKING	SHUTDOWN PULL LOW RESISTOR	TEMP. RANGE	PACKAGE (Green)
G5243AT11U	523Ax	75Ω	-40°C to +85°C	SOT-23-5

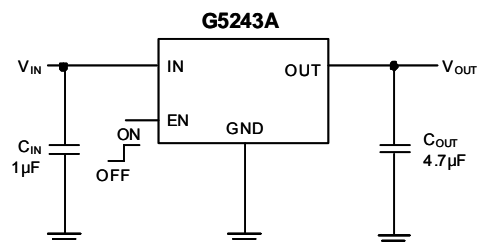
Note: T1: SOT-23-5

1: Bonding Code
U: Tape & Reel

Pin Configuration



Typical Application Circuit



www.s-manuals.com