

48 MHZ USB CLOCK SOURCE

ICS50SK481

Description

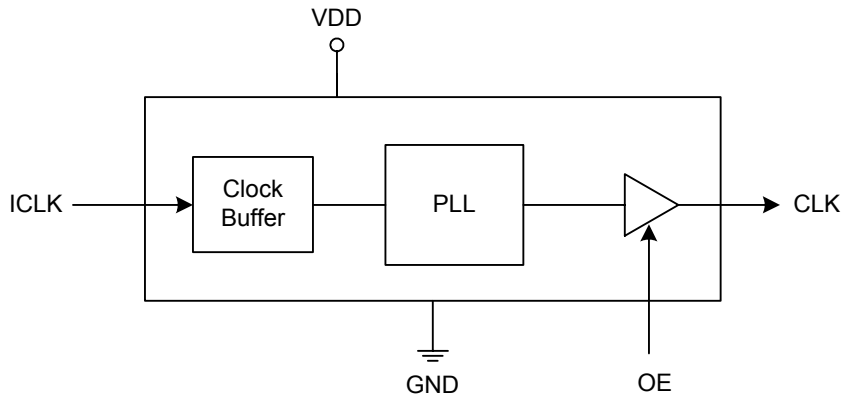
The ICS50SK481 is a low cost integrated clock synthesizer solution designed for replacing crystals and crystal oscillators.

The ICS50SK481 generates a very accurate 48.00 MHz clock output.

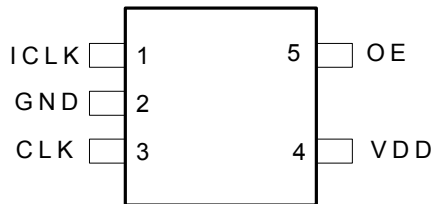
Features

- 25 MHz clock input
- The 48.00 MHz CLK output is USB2.0 reference clock compliant
- Output duty cycle 45/55% (worst case)
- Advanced, low-power CMOS process
- Industrial temperature range (-40 to +85°C)
- Packaged in 5-pin TSOT
- 3.3 V supply voltage
- Pb (lead) free package available
- Short term C-C Jitter of 100 ps

Block Diagram



Pin Assignment



Pin Descriptions

Pin Number	Pin Name	Pin Type	Pin Description
1	ICLK	Input	25 MHz clock input.
2	GND	Power	Connect to ground.
3	CLK	Output	PLL output clock. Internal pull-down resistor.
4	VDD	Power	Connect to 3.3 V.
5	OE	Input	Output Enable pin. Internal pull-up resistor. OE=0 outputs tristate with weak pull-down.

External Components

Decoupling Capacitor

As with any high-performance mixed-signal IC, the ICS5OSK481 must be isolated from system power supply noise to perform optimally.

A decoupling capacitor of 0.01 μ F must be connected between each VDD and the PCB ground plane.

Series Termination Resistor

Clock output traces over one inch should use series termination. To series terminate a 50 Ω trace (a commonly used trace impedance), place a 33 Ω resistor in series with the clock line, as close to the clock output pin as possible. The nominal impedance of the clock output is 20 Ω .

PCB Layout Recommendations

For optimum device performance and lowest output phase noise, the following guidelines should be observed.

1) The 0.01 μ F decoupling capacitors should be mounted on the component side of the board as close to the VDD pin as possible. No vias should be used between the decoupling capacitors and VDD pins. The PCB trace to VDD pins

should be kept as short as possible, as should the PCB trace to the ground via.

2) To minimize EMI, the 33 Ω series termination resistor (if needed) should be placed close to the clock output.

3) An optimum layout is one with all components on the same side of the board, minimizing vias through other signal layers. Other signal traces should be routed away from the ICS5OSK481. This includes signal traces just underneath the device, or on layers adjacent to the ground plane layer used by the device.

Absolute Maximum Ratings

Stresses above the ratings listed below can cause permanent damage to the ICS50SK481. These ratings, which are standard values for ICS commercially rated parts, are stress ratings only. Functional operation of the device at these or any other conditions above those indicated in the operational sections of the specifications is not implied. Exposure to absolute maximum rating conditions for extended periods can affect product reliability. Electrical parameters are guaranteed only over the recommended operating temperature range.

Item	Rating
Max Supply Voltage, VDD	7 V
Logic Inputs	-0.5 V to VDD+0.5 V
Ambient Operating Temperature	-40 to +85°C
Storage Temperature	-65 to +150°C
Junction Temperature	125°C
Soldering Temperature	260°C

Recommended Operation Conditions

Parameter	Min.	Typ.	Max.	Units
Ambient Operating Temperature	-40		+85	°C
Power Supply Voltage (measured in respect to GND)	+3.135	+3.3	+3.465	V

DC Electrical Characteristics

VDD=3.3 V ±5%, Ambient temperature -40 to +85°C, CL = 15 pF, unless stated otherwise

Parameter	Symbol	Conditions	Min.	Typ.	Max.	Units
Operating Voltage	VDD		3.135		3.465	V
Input High Voltage, ICLK only	V _{IH}	ICLK	VDD/2+1			V
Input Low Voltage, ICLK only	V _{IL}	ICLK			VDD/2-1	V
Input High Voltage	V _{IH}	OE	2.0			V
Input Low Voltage	V _{IL}	OE			0.8	V
Output High Voltage	V _{OH}	I _{OH} = -12 mA	2.4			V
Output Low Voltage	V _{OL}	I _{OL} = 12 mA			0.4	V
IDD Operating Supply Current	IDD	No Load		TBD		mA
Short Circuit Current	I _{OS}	CLK output		±50		mA
Internal Pull-up Resistor	R _{PU}	OE		270		kΩ
Input Capacitance, ICLK, OE	C _{IN}	OE, select pins		4		pF
Nominal Output Impedance				20		Ω

AC Electrical Characteristics

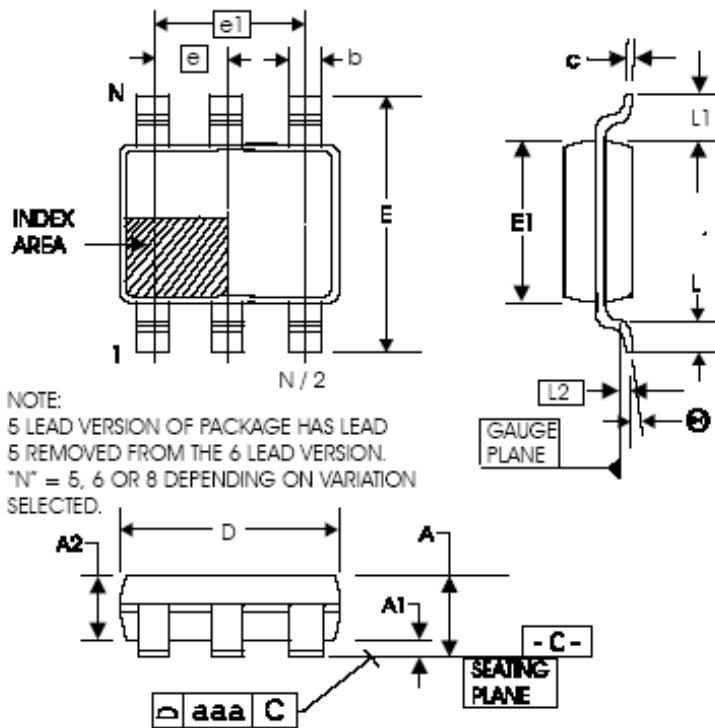
VDD = 3.3 V ±5%, Ambient Temperature -40 to +85°C, CL = 15 pF, unless stated otherwise

Parameter	Symbol	Conditions	Min.	Typ.	Max.	Units
Input Clock Frequency, clock input	f _{IN}		0.5	25		MHz
Output Frequency	f _{OUT}			48		MHz
Output Clock Rise Time	t _{OR}	0.8 to 2.0 V, Note 1		1		ns
Output Clock Fall Time	t _{OF}	2.0 to 0.8 V, Note 1		1		ns
Output Clock Duty Cycle	t _{DC}	1.5 V	45	50	60	%
Output Frequency Error				0		ppm
Output Enable Time, OE high to output on				50		ns
Output Disable Time, OE low to tri-state				50		ns
Absolute Clock Period Jitter	t _{JA}	Deviation from mean, Note 1		100		ps

Note 1: Measured with a 15 pF load.

Package Outline and Package Dimensions (5-pin TSOT)

Package dimensions are kept current with JEDEC Publication No. 95



Symbol	Millimeters	
	Min	Max
A	—	1.00
A1	0.01	0.10
A2	0.84	0.90
b	0.30	0.45
c	0.12	0.20
D	2.90 BASIC	
E	2.80 BASIC	
E1	1.60 BASIC	
e	0.95 BASIC	
e1	1.90 BASIC	
L	0.30	0.50
L1	0.60 REF	
L2	0.25 BASIC	
θ	0°	8°
aaa	—	0.10

Ordering Information

Part / Order Number	Marking	Shipping Packaging	Package	Temperature
ICS5OSK481TILF	1TIL	Tubes	5-pin TSOT	-40 to +85° C
ICS5OSK481TILFT	1TIL	Tape and Reel	5-pin TSOT	-40 to +85° C

Parts that are ordered with a "LF" suffix to the part number are the Pb-Free configuration and are RoHS compliant.

While the information presented herein has been checked for both accuracy and reliability, Integrated Circuit Systems (ICS) assumes no responsibility for either its use or for the infringement of any patents or other rights of third parties, which would result from its use. No other circuits, patents, or licenses are implied. This product is intended for use in normal commercial applications. Any other applications such as those requiring extended temperature range, high reliability, or other extraordinary environmental requirements are not recommended without additional processing by ICS. ICS reserves the right to change any circuitry or specifications without notice. ICS does not authorize or warrant any ICS product for use in life support devices or critical medical instruments.

Innovate with IDT and accelerate your future networks. Contact:

www.IDT.com

For Sales

800-345-7015
408-284-8200
Fax: 408-284-2775

For Tech Support

<product line email>
<product line phone>

Corporate Headquarters

Integrated Device Technology, Inc.
6024 Silver Creek Valley Road
San Jose, CA 95138
United States
800 345 7015
+408 284 8200 (outside U.S.)

Asia Pacific and Japan

Integrated Device Technology
Singapore (1997) Pte. Ltd.
Reg. No. 199707558G
435 Orchard Road
#20-03 Wisma Atria
Singapore 238877
+65 6 887 5505

Europe

IDT Europe, Limited
321 Kingston Road
Leatherhead, Surrey
KT22 7TU
England
+44 1372 363 339



www.IDT.com

www.s-manuals.com